

Introduction

This design is a Constant Current LED Driver. LEDs are current-driven devices whose brightness is proportional to their forward current. Forward current can be controlled in two ways. The first method is using the LED voltage and current curve to determine what voltage needs to be applied to the LED to generate the desired forward current. The second, preferred method of regulating LED current is to drive the LED with a constant-current source. The constant-current source eliminates changes in current due to variations in forward voltage. Preferably, the input power supply regulates the voltage across a current-sense resistor. The power-supply reference voltage and the value of the current-sense resistor determine the LED current.

The LED current is set using the following equation:

$$I_{LED} = \frac{V_{REF}}{R}$$

Where:

- R is connected between the V_{REF} pin and GND.

The maximum I_{LED} is limited by output pin characteristics. The typical current for one output pin is 24 mA at VDD=3.3V, and 68 mA at VDD=5.0 V.

The application circuit can be seen in Figure 2.

LED constant current circuit design

As shown in Figure 1, a dual constant current LED driver can be implemented using two analog comparators (ACMP0 and ACMP1) and two 2-bit LUTs (LUT2 and LUT3).

LED constant current circuit analysis

When this device is powered on, the output pins (LED1_1, LED1_2, LED2_1 and LED2_2) are LOW. The EN1 (PIN 2) and the EN2 (PIN 4) are independent enables for each pair of output pins.

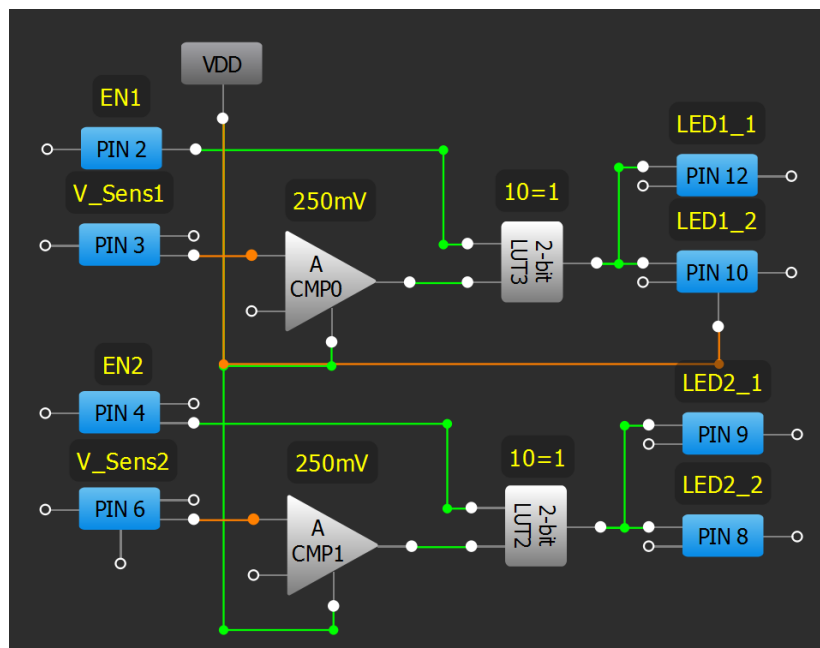


Figure 1. LED constant current circuit design

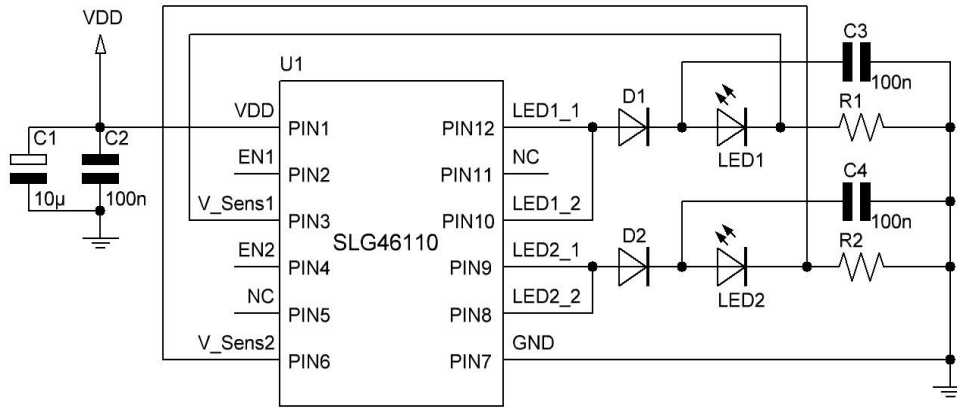


Figure 2. LED constant current typical application circuit

When EN1 is HIGH, the output pins LED1_1 and LED1_2 are enabled. When EN2 is HIGH, the output pins LED2_1 and LED2_2 are enabled. When EN1 is LOW, the output pins LED1_1 and LED1_2 are disabled. When EN2 is LOW, the output pins LED2_1 and LED2_2 are disabled. Capacitors C3, C4 help to smooth the on-off switching behavior of the output pairs as they regulate the average current.

Conclusion

A constant current LED driver can be easily implemented using a Green PAK IC. It has low power consumption, small board area footprint, and only a few external components are needed to complete the design.

Related Files

Programming code for [GreenPAK Designer](#).



About the Author

Name: Oleg Gorodechny

Background: Oleg Gorodechny received Bachelor's degree in "Computer Science" in 2009 and Master's degree in "Information Control Systems and Technologies" in 2011 from Lviv Polytechnic National University. Since 2011 he has been working as a design engineer, and in 2013 he began to work for Silego Technology Inc. as an application engineer. Currently he designs analog circuits and their applications.

Contact: appnotes@silego.com



Document History

Document Title: Constant Current LED Driver

Document Number: AN-1026

Revision	Orig. of Change	Submission Date	Description of Change
A	Oleg Gorodechny	06/26/2014	New application note

Worldwide Sales and Design Support

Silego Technology maintains a worldwide network of offices, solution centers, manufacturer's representatives, and distributors. To find the office closest to you, visit us at [Silego Locations](#).

About Silego Technology

Silego Technology, Inc. is a fabless semiconductor company headquartered in Santa Clara, California, with operations in Taiwan, and additional design/technology centers in China, Korea and Ukraine.



SILEGO
TECHNOLOGY

Silego Technology Inc.
1715 Wyatt Drive
Santa Clara, CA 95054

Phone : 408-327-8800
Fax : 408-988-3800
Website : www.silego.com